



TECHNOLOGIES

Salus per **Lucem**[®]

ReVitalase - PRO AGE PLUS pag. 05

ReVitalase - MODEL UP pag. 07

InfraBed pag. 09

PhotonShape pag. 11

PhotonEpil pag. 13

ReLux pag. 15

WELLNESS THANKS TO LIGHT

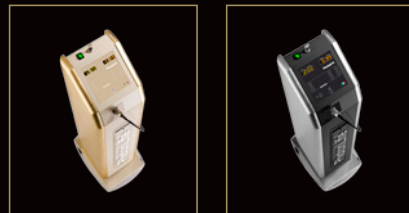
ReVitalase

PRO AGE PLUS



Colours available:

- Gold sides
Cream body
- Silver sides
Black body



Purpose:

- Anti-Aging
- Dermo-regenerating
- Revitalising
- Tissue toning

- ★ Anti-inflammatory / Acne Treatment
- ★ Healing / Post-Acne Treatment

Technical Specifications:

- Type: Soft diodic infrared
- Wavelength: 905 ± 10 nm invisible
- Size: 39x52x100 cm
- Overall weight: 28 Kg
- Power: 110/220 Volt

Complete with:

- Technical Manual
- Disposable Film
- Promotional Material

Probes:



P3
Suitable for treatment around the eyes - lips



P12
Suitable for treating medium-sized surfaces on the body



Treatment Face - Breasts Décolletage

ReVitalase technology is completely safe. Beauty treatments are:

- non-invasive
- drug-free
- no surgery
- painless

ReVitalase technology is used to treat blemishes with absolute precision, respecting the surrounding tissues, which are in no way altered by the treatment.



Usage time:

Average recommended overall treatment time:

- Face and décolletage = 30 min.
- Breasts = 20 min.
- Arms = 30 min.

Technology:

ReVitalase PRO AGE PLUS, is an exceptional laser renowned for its delicate, albeit in-depth, effect. It promotes tissue tone, favouring fibro-plastic activity as well as the synthesis of Collagen and Elastin fibres. Furthermore, it stimulates micro-circulation, reducing bags and dark shadows in the delicate area around the eyes, making the skin glow. Wrinkles are minimised, facial features are relaxed, and the skin becomes both firmer and softer.

★ **PLUS:** Its anti-inflammatory effect, when combined with its healing properties, provides an added value that makes this technology an essential and effective tool, even for acne and post-acne treatments.

Penetrates deeply

ReVitalase

MODEL UP



Colours available:

- Gold sides
Cream body
- Silver sides
Black body



Purpose:

- Anti-Cellulite
- Reduces of Adipose Deposits
- Draining
- Anti-Stretch Mark
- Tissue toning

Technical Specifications:

- Type: Soft diodic infrared
- Wavelength: 905 ± 10 nm invisible
- Size: 39x52x100 cm
- Overall weight: 28 Kg
- Power: 110/220 Volt

Complete with:

- Technical Manual
- Disposable Film
- Promotional Material

Probes:



P12
Suitable for treating medium-sized surfaces on the body



P27
Suitable for treating large surfaces on the body



Body Treatment

ReVitalase technology is completely safe. Beauty treatments are:

- non-invasive
- drug-free
- no surgery
- painless

ReVitalase technology works on blemishes with absolute precision, respecting the surrounding tissue, which is no way altered by treatment.



Usage time:

Average recommended overall treatment time:

- Legs = 40 min.
- Buttocks = 20 min.
- Abdomen = 15 min.

Technology:

ReVitalase MODEL UP is an effective, non-invasive solution used to treat cellulite, and more. This revolutionary technology promotes tone and - thanks to an energy reaction at a cellular level - efficiently contrasts stretch-marks. Relaxed areas are instantaneously lifted and the skin appears both firmer and softer, right from the very first sessions.

Penetrates deeply

PhotonLife reserves the right to change the products, while maintaining its elevated quality standards.

InfraBed



Colours available:

- Whitened wengè base
Gold leg
- Black base
Silver leg



Purpose:

- Relaxing
- Smoothing
- Anti-inflammatory
- Improves localised blood flow

Technical Specifications:

- Type: Soft infrared LED emitter
- LED Wavelength: 905 ± 30 nm invisible
- Size: 84x80x195 cm
- Overall weight: 100 Kg
- Power: 110/220 Volt

Complete with:

- Technical Manual
- 100 InfraBed Protective Films
- Promotional Material



Support technology for Face-Body treatments

The body is laid down on the technology (face downwards/upwards) and enveloped by 7,000 athermic infrared LED lights, which improves blood flow in all of the areas being treated.



Usage time:

All you need is **15/20 minutes** (per position) to relax completely and obtain outstanding results throughout the whole body. The timer will tell you when treatment is over.

Technology:

Excellent as supporting technology, InfraBed promotes an increase in blood flow. Moreover, it has a relaxing, anti-inflammatory effect. In addition, it unwinds the body and prepares it for treatment in an optimum manner, optimising efficacy. Helps both the body and mind rediscover their natural wellbeing.

Tissue penetration: 1-2 cm

PhotonShape



Colours available:

- White body
Gold front
- Silver body
Black front



Purpose:

- Slimming
- Toning
- Draining
- Reactivates Microcirculation

Technical Specifications:

- Type: Soft infrared LED emitter
- LED Wavelength: 905 ± 30 nm invisible
- Size: 150x110x155 cm
- Overall weight: 150 Kg
- Power: 110/220 Volt

Complete with:

- Technical Manual
- Treadmill
- Promotional Material



Treatment Waist and Lower Limbs

Both cellular metabolism and micro-circulation in the skin are reactivated as you walk on the Treadmill, massaged by PhotonShape lights.



Usage time:

All you need is **20 minutes** of walking with the right breathing to treat the waist and lower limbs. The timer will tell you when treatment is over.

Technology:

PhotonShape is an innovative, multifunctional technology that provides noticeable results in terms of remodelling. The light massage, accompanied by the beneficial effects of physical training, supported by the Treadmill, promotes the reactivation of cellular metabolism as well as micro-circulation in the skin, providing a slimming and toning effect. Over time, it slims the body, toning and making the skin more compact.

Tissue penetration: 1-2 cm

PhotonEpil



PhotonEpil Gel

Light-diffusing fluid.



Purpose:

- Hair removal, for any skin colour or type
- Hair removal, for any hair colour or type
- Hair removal, 12 months of the year

Technical Specifications:

- Type: Soft infrared LED emitter
- LED Wavelength: 525/450 ± 30 nm
- Size: 39x52x100 cm
- Overall weight: 28 Kg
- Power: 110/220 Volt

Complete with:

- Technical Manual
- 1 PhotonEpil Gel bottle
- 100 disposable bags
- Promotional Material

Mouse:



525 nm GREEN

Suitable for the removal of light hairs



450 nm BLUE

Suitable for the removal of dark hairs



Hair growth delaying treatment

After waxing* and thanks to the combined effects of Light and PhotonEpil Gel, PhotonEpil slows down hair re-growth without damaging or scalding the skin.

* PhotonEpil's results are dependent on waxing being carried out in an optimum manner. In fact, no hair should be present in the follicle during application.



Usage time:

Average recommended overall treatment time per area:

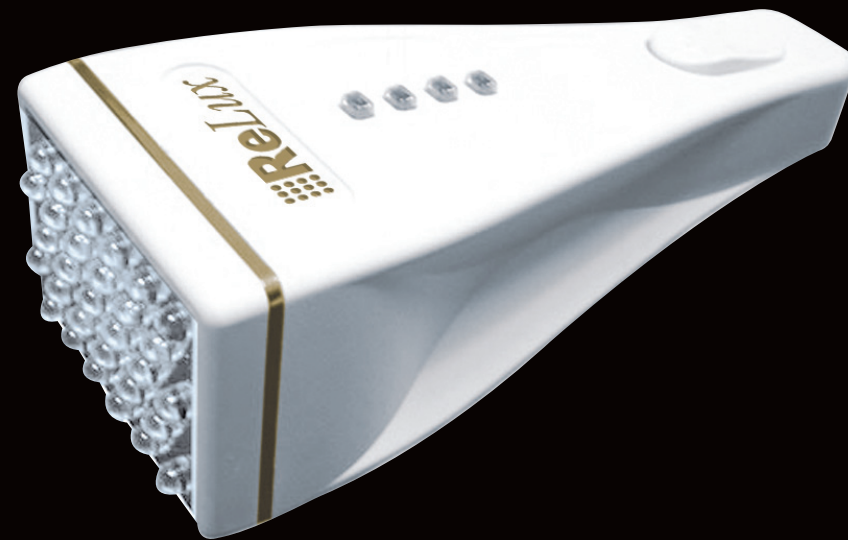
- Leg = 2 min. approx.
- Bikini = 30 sec. approx.
- Armpit = 30 sec. approx.

Technology:

PhotonEpil is presented as a revolutionary, hair-removal treatment that is suitable for and can be used by everyone. The light that is emitted interrupts the supply of the nutrients that hairs require to grow back, favouring capillary sclerotization. Hairs become progressively weaker, until they stop growing in the long-run. This technology works in synergy with a special, light-diffusing fluid that - thanks to its active anti-hair ingredients - interrupts the lifecycle of each hair. Users can immediately notice a significant amount of thinning and reduction in hairs, right from the very first sessions.

ReLux

DOMESTIC USE



Available in a handy box,
complete with:

- Wall charger
- Spare frames
- Protective plastic bags



Purpose:

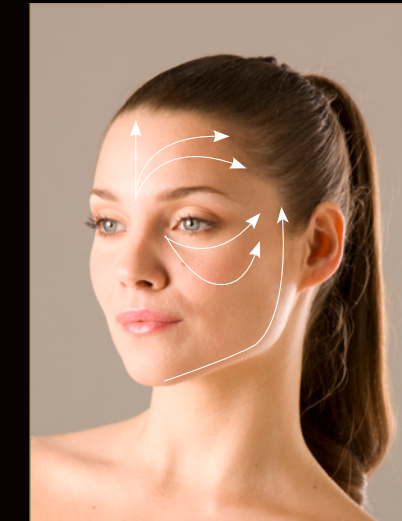
- Revitalising
- Toning
- Firming
- Acts as a Vehicle for Cosmetic Products

Technical Specifications:

- Type: Soft infrared LED emitter
- LED Wavelength: 905 ± 30 nm invisible
- Size: 7,5x21x17,9 cm
- Overall weight: 110 gr
- Power: 110/220 Volt - 12 Vc - 1,5 A max

Complete with:

- Technical Manual
- Promotional Material



Treatment Face - Breasts Décolletage

ReLux technology is completely safe. The beauty treatment is painless and non-invasive. Moreover, it does not require the use of drugs or surgery.

ReLux technology works on blemishes with precision, respecting the surrounding tissue, which is no way altered by treatment.



Usage time:

Average recommended
treatment time per area:

- Around the eyes:
approx. 5 min.
- Face - Neck - Lips
approx. 10-15 min.
- Breasts - Décolletage:
15-20 min.

Technology:

An invaluable and essential tool for both maintenance treatments and self-treatment. It promotes cellular nutrition, stimulates the regeneration of the skin, and has a markedly toning effect. An excellent vehicle for cosmetics, ReLux can turn any treatment into a "luxury treatment." Right from the start, the skin appears more vital, toned and radiant, with a more uniform tone.

Tissue penetration: 1-2 cm



info@photonclub.com - www.photonclub.com